

## 1930-31 Roadster, Phaeton & Roadster Pickup Bodies



Roadster

- **Fiberglass body**
  - Original body lines retained
  - Steel reinforced
  - Hand laminated fiberglass
- **Doors installed with latches**
  - Inner and outer panels like original
  - 1928 or 1931 latches available
  - Stock or hidden hinges
  - Dovetails installed
- **Cowl top removable**
  - "Filled" cowl top, or dummy gas neck
  - Working cowl vent available

- **Roadster Deck Lid Installed**

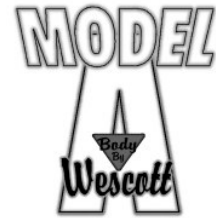
- Inner and outer panels like original
- Custom improved hinges
- Outside handle or remote latch
- Drip rails like original

- **Roadster stock floor**

- Original or street rod frame

- **Front Seat**

- Front riser not included
- Custom seats can easily be used
- Phaeton seat back stock or 3" set back

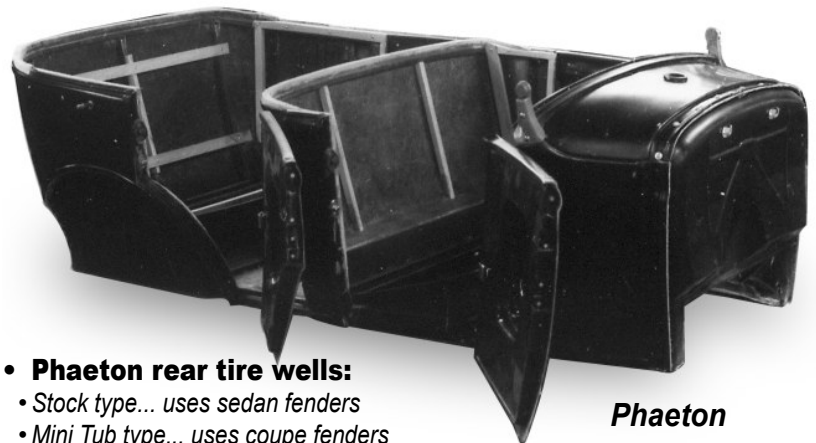


Roadster  
Pickup Cab

- **Back Seat (phaeton)**
  - Platform is part of body structure
- **Upholstry Tack Wood**
  - Installed
- **Top Mount**
  - Top mount on roadster installed
  - Top studs on phaeton included

- **Phaeton rear tire wells:**

- Stock type... uses sedan fenders
- Mini Tub type... uses coupe fenders



Phaeton

### Built-in internal steel reinforcing for safety & strength

Cross-bracing of cowl and quarter panels, plus solid hinge mounts, creates exceptional rigidity and door alignment control



Fabricated box tubing "cage" completely surrounds cockpit

**Critical mount points supported by steel:**

- Door hinge mounts
- Deck lid hinge mounts
- Door latch mounts
- Windshield post mounts
- Door handle mount tabs
- Top iron mount
- Door check strap mounts

Steel reinforcing is installed between fiberglass inner and outer door and deck lid panels



\* Parts with price listed as "not.avbl" are not known to be available at this time, but are listed for reference.

## 1930-31 Roadster, Phaeton & Roadster Pickup Bodies



An early Wescott '31 Roadster built by Dee Wescott

**• Firewall Options**

- Stock style
- Cowl top removable



**• Recessed for V8:**

- Minimal recess design
- 1" left, 2" right, 4" center



**• Dash Options**

- Stock
- Filled
- Auburn Style
- 1932 Style



**Prices**

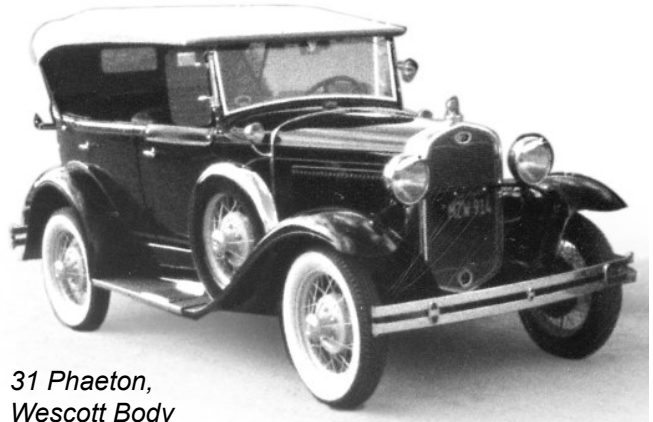
1931 Roadster	10000.00
1931 Phaeton	13000.00
1931 Roadster Pickup	6000.00

**Options**

A Firewall	Stock or Recessed	std.
B Phaeton Front Seat	Stock or 3" setback	std.
C Roadster Deck Lid	Trunk or Rumble	std.
D Dash	Stock, filled, Auburn, '32	std.
E Cowl Top	Filled or "dummy filler"	std.
	Working Vent	300.00
F Door hinge	Stock or hidden	std.
G Deck latch	Stock or remote	std.
H Phaeton wheelwell	Stock (use sedan fender)	std.
	Mini-tub (coupe fender)	200.00
L Door latch	1928 (inside handle only)	std.
	1930-31 (use outside handle)	std.

**Fiberglass fender package:**

Front fenders, rear fenders, side splash aprons	1900.00
---	---------



31 Phaeton,  
Wescott Body  
Built by Ted Dobbins



\* Parts with price listed as "not.avbl" are not known to be available at this time, but are listed for reference.