

1938-41 Commercial Grille, Hood, Fenders and Running Boards



1938-39 1/2 Ton and Truck Grille

81C-8200	Grille, 1938	not.avbl
91C-8200	Grille, 1939	not.avbl
81C-8213	Grille center V8 emblem, 1938, chrome	115.00 ea
81C-8157	Grille center trim, 1938	not.avbl
91C-8157	Grille center trim, 1939	not.avbl
81C-8184	Grille outer trime ring, 1938-39	not.avbl

1938-39 1/2 Ton and Truck Radiator Shroud

81C-8084/5-B	Radiator side panels	not.avbl
81C-8240-B	Grille inner baffel	not.avbl
81C-16550	Grille to crossmember shield	not.avbl

1938-39 1/2 Ton and Truck Hood

81C-16710-A	Hood top	not.avbl
81C-16618-A	Hood side panel RH	not.avbl
81C-16619-A	Hood side panel LH	not.avbl
81A-16750-RK	Hood side panel mounting studs & brackets	50.00 ea

1938-39 1/2 Ton and Truck Hood Handles & Ornaments

	1938		1939	
Hood Handle	81C-8215-A	not.avbl	91C-8215	not.avbl
Handle Base	81C-8218-A	not.avbl	91C-8218	not.avbl
Base Gasket	81C-8227-A	not.avbl	91C-8227	not.avbl

1938-39 1/2 Ton and Truck Hood Emblem

"Ford 85"

81C-16606	not.avbl
-----------	----------



1938-39 1/2 Ton and Truck Hood Latch

81A-16628	Hood latch cam	not.avbl
81A-16650	Hood handle tension spring	not.avbl

1938-39 1/2 Ton and Truck Hood Hinge

Hood Hinge Brackets

81C-16796-S	Plain	not.avbl
81C-16796-SS	Stainless	not.avbl

Hood Hinge Bolts, w/safety wire

91A-16796-HK	Set of 4	7.50 ea
--------------	----------	---------

Hood Support Arms

1938 Prop (ratchet style)

78-16782	Props (ratchet type)	not.avbl
----------	----------------------	----------

1939 Prop (spring arm style)

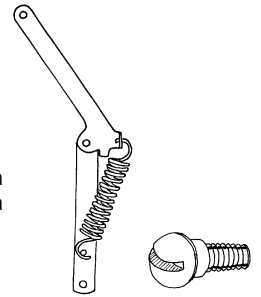
91A-16782/3	Plain	100.00	pr
91A-16782/3-SS	Stainless	95.00	pr

1939 Replacement spring only:

91A-16789	Plain	10.00	ea
91A-16789-SS	Stainless	15.00	ea

Hood Support Shoulder Screws

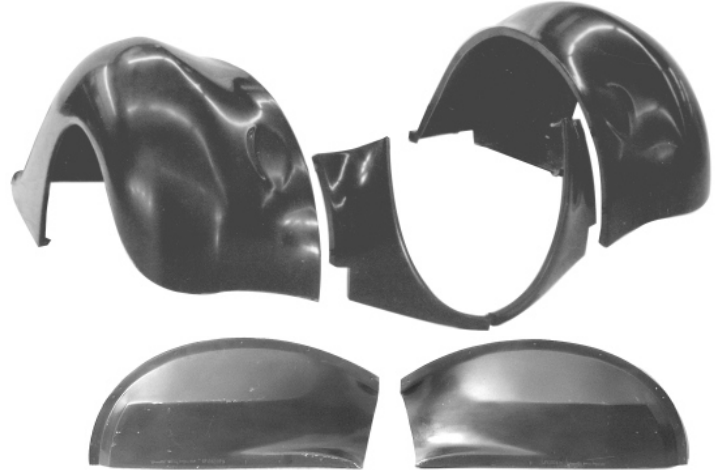
01A-16782-MS	Plain	10.00	pr
01A-16782-MSS	Stainless	12.50	pr



1938-39 1/2 Ton and Truck Hood Lacing & Bumpers

81C-16739-S	Hood lacing on grille, Rubber	10.00	ea
78-16740-S	Hood lacing on cowl	10.00	ea
81A-16761	Hood rubber bumper set	27.50	set

1938-39 1/2 Ton Pickup & Panel Front Fender, Fiberglass



RFF3839PU	RH front, 1938-39 Pickup	700.00	ea
LFF3839PU	LH front, 1938-39 Pickup	700.00	ea
RFE3839PU	RH fender/grille extension	230.00	ea
LFE3839PU	LH fender/grille extension	230.00	ea
RFI3839PU	RH Inner front fender	250.00	ea
RFI3839PU	LH Inner front fender	250.00	ea

1938-39 1/2 Ton Pickup & Panel Front Fender Brackets

	RH		LH			
Fender/Headlight bkt	81C-16025-R	not.avbl	81C-16025-L	not.avbl		
Fender bkt/frame brace	81C-16067-R	not.avbl	81C-16067-L	not.avbl		
Fender skirt brace	81C-16094	30.00	ea	81C-16094	30.00	ea

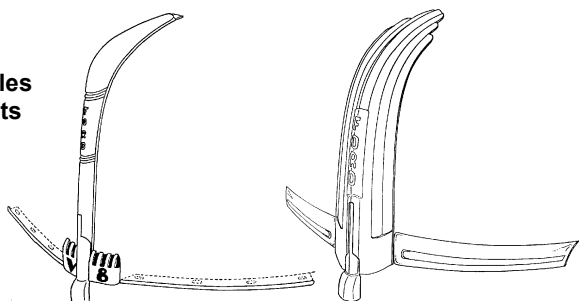
* Parts with price listed as "not.avbl" are not known to be available at this time, but are listed for reference.

1938-41 Commercial Grille, Hood, Fenders and Running Boards, cont



1940-41 1/2 Ton

Hood Handles & Ornaments



01C-8218-A	1940 Hood ornament, chrome	425.00 ea
11C-8218	1941 Hood ornament, chrome	not.avbl
91A-8219-S	1940-41 Hood ornament mount spacers (3)	25.00 set
01C-8215	1940 Hood handle, chrome	85.00 ea
11C-8215	1941 Hood handle, chrome	85.00 ea
91A-2466	1940-41 Handle to Ornament Pin	5.00 ea
01A-8216-S	1940 Hood lower trim, stainless	90.00 pr
11C-8264-S	1941 Hood lower trim, chrome	215.00 pr
01A-16604-S	1940 Hood V & 8 emblems	55.00 pr

1940-41 1/2 Ton Grille

Chrome center & black sides

01A-8200-AS not.avbl

Chrome center & sides

01A-8200-AC not.avbl

Lower grille panel, plain

01A-8188-A 125.00 ea

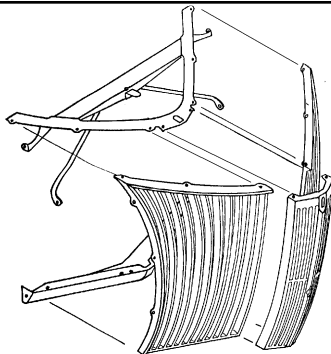
Lower grille panel, plain

01A-8188-C not.avbl

Grille upper brace assembly

Does not fit 1941 6 cylinder

01A-8145-A 155.00 ea



1940-41 1/2 Ton Grille to Radiator Shroud

Side baffle plates

91A-8104-S Steel 32.50 pr

Grille to crossmember shield

FSB3940P Fberglass 230.00 ea

91A-8240-B Steel 120.00 ea

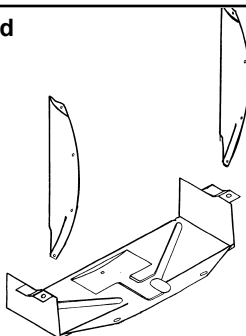
Grille apron to frame bumpers

01A-16188 Set of 4 7.50 set

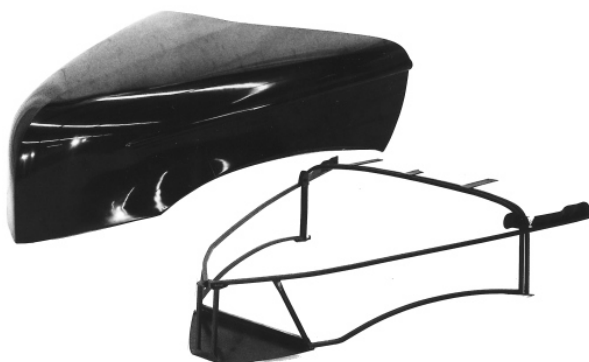
Grille upper shroud plate (street rod),

Assists cooling, prevents air bypassing radiator.

01A-8327-A Stainless 160.00 ea



1940-41 1/2 Ton Hood



HD4041PU Fiberglass with steel inner structure 1500.00 ea

1940-41 1/2 Ton Hood Center Trim Strip

01C-16736	Center strip, 1940-41, stainless	70.00 ea
91A-20003	Center trim strip mounting clips, 1940-41	5.00 set

1940-41 1/2 Ton Hood Latch Linkage & Safety Catch

01A-16781-S	Hood latch linkage spring set (V8-85 only)	10.00 set
01A-16892-A	Hood safety catch	65.00 ea
01A-16674-A	Hood latch release lever	75.00 ea
01A-16674-HK	Clevis pins & washers for release lever	not.avbl
01A-16718	Hood latch check on front brace	not.avbl
01A-16774-BHK	Hood front brace mount hardware	7.50 set

1940-41 Hood Hinges and Supports

Hood Hinges:

99A-16796-S	Plain	45.00 pr
99A-16796-SS	Stainless	55.00 pr

Hood Hinge Bolts w/safety wire

91A-16796-HK Set of 4 7.50 ea

Hood Support Arms with Springs

Uses shoulder bolt top and bottom

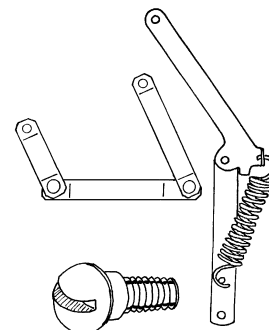
91A-16782/3	Plain	100.00 pr
91A-16782/3-SS	Stainless	95.00 pr

Spring only (replacement):

91A-16789	Plain	10.00 ea
91A-16789-SS	Stainless	15.00 ea

Hood Support Shoulder Screws

01A-16782-MS	Plain	10.00 pr
01A-16782-MSS	Stainless	12.50 pr



1940-41 1/2 Ton Hood Lacing & Hood Bumpers

78-16740-S	Hood lacing on cowl, rubber	10.00 ea
01C-16761	Hood bumper set	15.00 ea

1940-41 Hood Side "Ford" Emblem



91A-16606	1940	32.50 ea
11C-16606	1941	50.00 ea

* Parts with price listed as "not.avbl" are not known to be available at this time, but are listed for reference.

1938-41 Commercial Grille, Hood, Fenders and Running Boards, cont

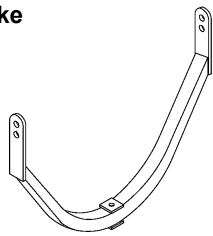
1940-41 1/2 Ton Front Fenders, Fiberglass



RFF4041PU	RH Front	700.00	ea
LFF4041PU	LH Front	700.00	ea
RFI40A	RH inner fender, fiberglass	250.00	ea
RFI40A	LH inner fender, fiberglass	250.00	ea
01A-16082/3	Inner fenders, stamped steel	425.00	pr

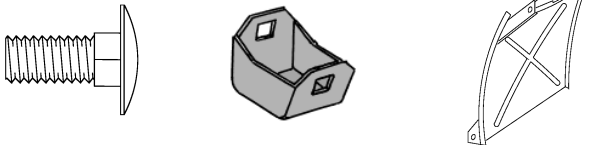
1940-41 1/2 Ton Front Fender Support Yoke

Mounts to front frame crossmember and cross braces inner fenders. Our beefed up Street Rod version is formed of 1" steel tubing with the cross strap left off for extra engine pulley clearance.



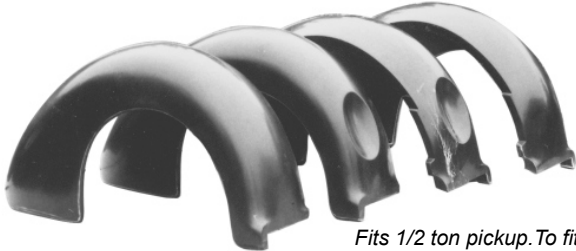
01A-16138-H	Yoke	200.00	ea
01A-16138-MB	Bolt/Spring	20.00	ea

1940-41 1/2 Ton Front Fender Braces & Special Bolts



91A-16088/9	Behind fender "Baffle" brace, stamped steel	95.00	pr
01C-16094	Fender to firewall brace	35.00	pr
01A-16005-MB	Inner fender/fender shallow carriage bolts (8)	20.00	set

1938-41 1/2 Ton Rear Fenders, Fiberglass



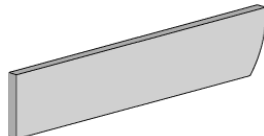
Fits 1/2 ton pickup. To fit the panel truck, trim the inside flange.

RRF3841PU	RH: Plain (no tire dimple)	600.00	ea
LRF3841PU	LH: Plain (no tire dimple)	600.00	ea
RRF3841PUW	RH: w/dimple for spare tire	600.00	ea
LRF3841PUW	LH: w/dimple for spare tire	600.00	ea

1/2 Ton Running Board To Bed Aprons, stamped steel

Mount between box and running boards in front of rear fenders.

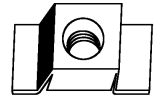
81C-16535-S	45.00	pr
-------------	-------	----



5/16-24 Cage Nuts

Welded to body and frame for fender and running board mounting.

AH-3145	Cage nut	5.00	ea
---------	----------	------	----



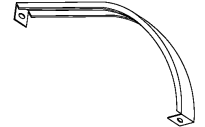
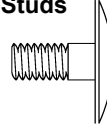
Rear Fender Brackets & Bed Studs

1/2 Ton Rear fender brackets

81C-16391	30.00	ea
-----------	-------	----

Bed Fender Studs, set of 4

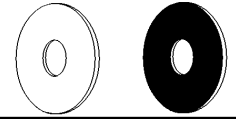
AH-1173	1.00	ea
---------	------	----



1939-1940 Fender Washer Sets

Rubber washers and large metal washers.

01A-16005-MW	Set of 30 each	22.50	set
--------------	----------------	-------	-----



Fender Welt

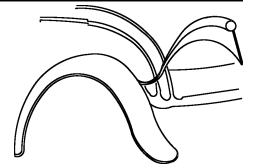
Black vinyl, 25 ft. length

48-16070-B	3/16" bead	17.50	ea
------------	------------	-------	----

48-16070-D	1/4" bead	17.50	ea
------------	-----------	-------	----

Vinyl, clad w/stainless bead, 8 ft. length

48-16070-SS	7/32" bead	30.00	ea
-------------	------------	-------	----

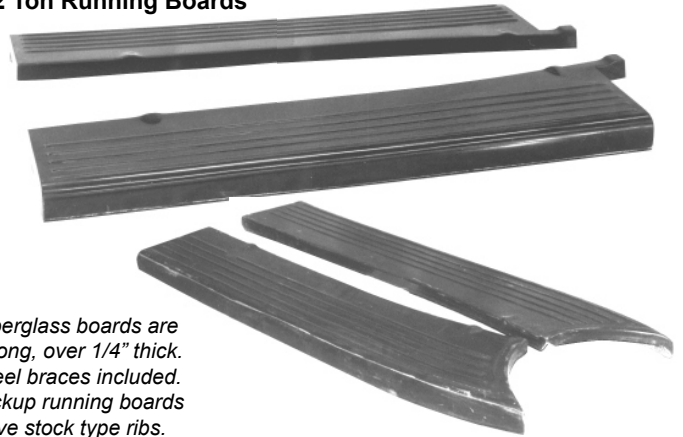


Vinyl, COLORED, Use part suffix to indicate color

Maroon: -MR, Caramel: -CR, Medium Blue: -BLM, Red: -RD, Dark Brown: -BRD, Dark Green: -GRD, White: -WH, Grey: -GY, Bright Orange: -OR, Yellow: -YL, Bright Red: -RR

48-16070-xx	25 ft length, Specify Color	40.00	ea
-------------	-----------------------------	-------	----

1/2 Ton Running Boards



Fiberglass boards are strong, over 1/4" thick. Steel braces included. Pickup running boards have stock type ribs.

RRB3839PU	1938-39 RH Running board, fiberglass	500.00	ea
LRB3839PU	1938-39 LH Running board, fiberglass	500.00	ea
81C-16450-S	1938-39 Running Boards, steel	not.avbl	
RRB4041PU	1940-41 RH Running board, fiberglass	500.00	ea
LRB4041PU	1940-41 LH Running board, fiberglass	500.00	ea
01C-16450-S	1940-41 Running boards, steel	not.avbl	

Teardrop Fender Skirts, Fiberglass

Excellent fiberglass reproductions of the aftermarket bubbled fender skirts that were so popular in the '50's. Includes locking arms to latch to the top of the fender, clamps to the bottom of the skirts to the front and rear of the wheel opening, stainless screws, and rubber seals.



FST3740F

Fender Skirts, fiberglass

800.00 pr

* Parts with price listed as "not.avbl" are not known to be available at this time, but are listed for reference.