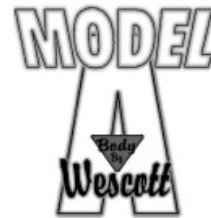
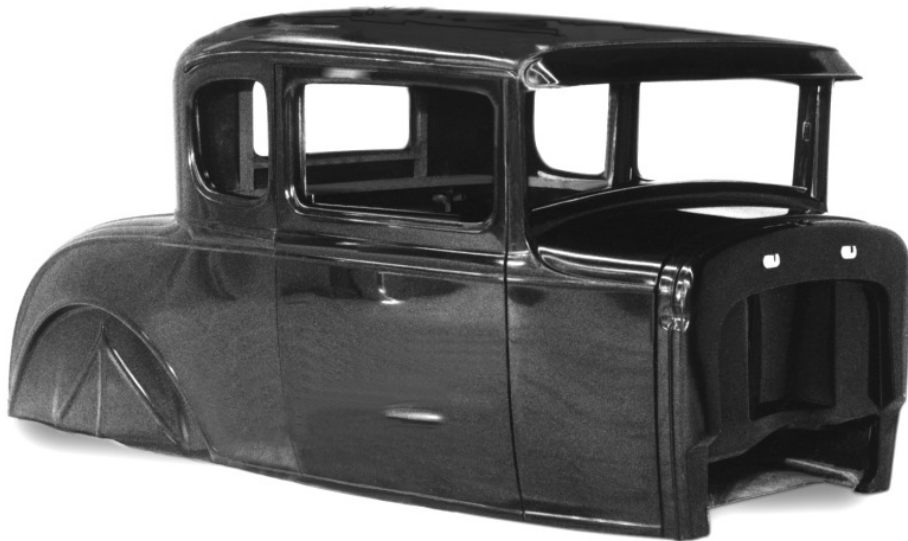


1930-31 5 Window Coupe Body

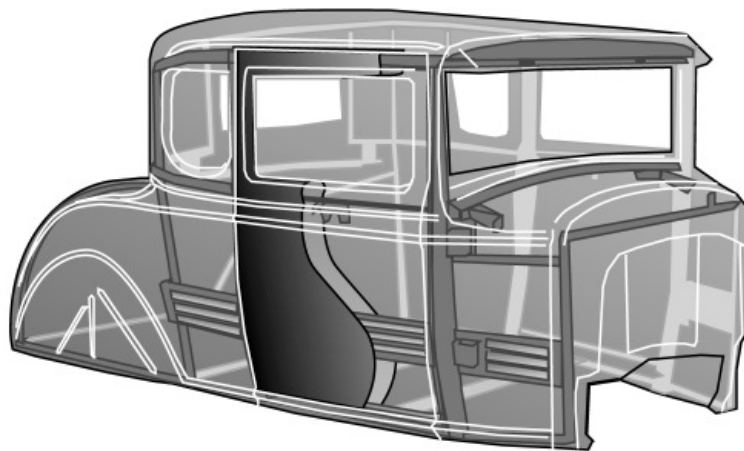


- **Fiberglass body**
 - Steel reinforced
 - Hand laminated fiberglass
 - Drip rails installed
 - Garnish moldings included
- **Recessed Firewall**
 - Minimal recess design for Chevy V8

Built-in internal steel reinforcing for safety & strength

- **Cockpit Structure**

- Surrounded by a box tubing "cage"
- Upper shoulder harness mounts behind door
- Seat belt mounts on floor
- Steel side rail reinforcement from cowl to rear of cockpit



- **Dash Structure**

- Designed as defroster plenum
- Provisions for steering column

- **Hard mounting points**

- Door hinges
- Door latches
- Door handles
- Trunk hinges
- Wiper motor
- Steering Column
- Seat belts and shoulder harness

- **Overall Stability**

- Cross bracing of cowl and quarter panels, plus solid hinge mounts creates exceptional rigidity and door alignment control.



* Parts with price listed as "not.avbl" are not known to be available at this time, but are listed for reference.

1930-31 5 Window Coupe Body



'31 5-Window
Wescott Body
Owned by Dave Welt
Belleville, MI

- **Street Rod Features**

- Chopped 2"
- Flush mounted doors
(original Ford doors overlapped at back).
- Cowl top molded with body.

- **Doors installed**

- **Hidden hinges and "bear jaw" latches**

- Inner and outer panels like original
- Garnish moldings included
- Mounts for 32-38 square shaft inside handles installed
- Outside handle mounts optional.
- Hidden hinges swing nearly level
- Uses "stock" window felt, snap in installation
- Manual or power windows optional

- **Swing out or Glue in Windshield options**

- Studs for swing out windshield included
- Spacer for glue in windshield easily fabricated

Prices

1931 Coupe

base price:

16000.00

Options

G. Deck latch	Stock or remote	
L. Outside handle	no setup	
	with linkage and key lock	200.00

upcharge:

std.
std.
200.00

- **1932 Style Dash installed in body**



Fiberglass fender package:

Front fenders, rear fenders, side splash aprons 1750.00

Windows

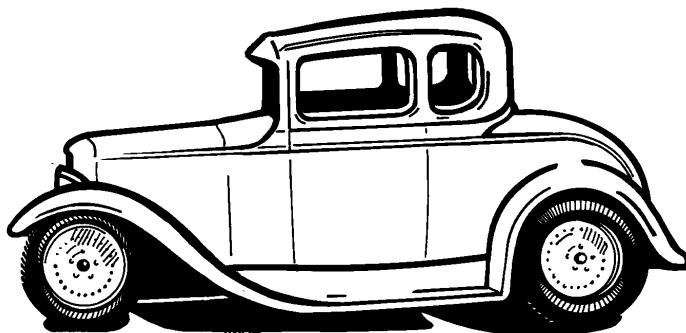
Operating windows include tempered glass, regulators, and felt, fixed windows include glass only, not installed

Specify clear, light grey, or light green tint

Doors	Power operated	1200.00
Doors	Manual operated	800.00
Back window	Power operated	1000.00
Back window	Manual operated	750.00
Back window	Fixed, glass only	150.00
Quarter windows	Fixed, glass only	300.00

Power Windshield Wipers installed:

Heavy duty "Specialty Power Windows" system	750.00
Dual wipers under header, cable drive motor mounts behind seat	



* Parts with price listed as "not.avbl" are not known to be available at this time, but are listed for reference.