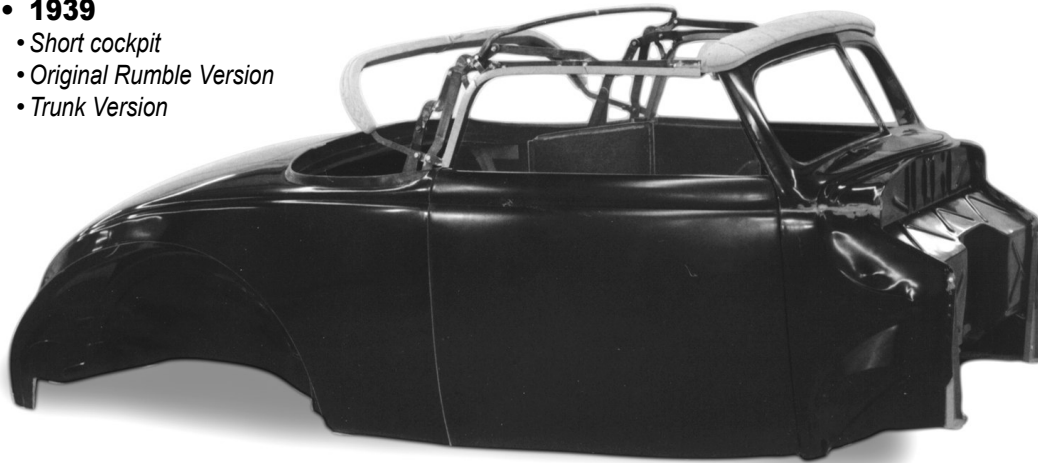


## 1939 and 1940 Convertible Bodies

- **1939**
  - Short cockpit
  - Original Rumble Version
  - Trunk Version



**39 & 40**  
Body  
By  
**Wescott**

- **Fiberglass body**
  - Original body lines retained
  - Steel reinforced
  - Hand laminated fiberglass
  - Door and Windshield garnish moldings included

- **Fiberglass body**
  - Original body lines retained
  - Steel reinforced
  - Hand laminated fiberglass

- **Doors installed with latches**
  - Inner and outer panels like original
  - Bear jaw style latches  
inside handle mounts included  
outside handle mounts optional
  - Stock or hidden hinges
- **Cowl and windshield features**
  - Working vent available or filled cowl
  - Stock height or 2" chop



- **1940**
  - Long 2 seat cockpit
  - Trunk Lid



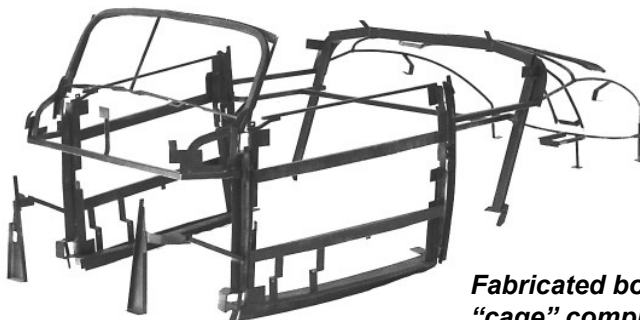
### Built-in internal steel reinforcing for safety & strength

**Cross-bracing of cowl and quarter panels, plus solid hinge mounts, creates exceptional rigidity and door alignment control**

**Critical mount points supported by steel:**

- Door hinges
- Door latches
- Trunk hinges
- Top Iron mounts
- Top Latch mounts

**Steel reinforcing is installed between fiberglass inner and outer door and deck lid panels**



**Fabricated box tubing "cage" completely surrounds cockpit**

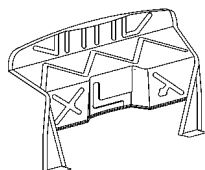
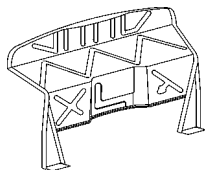
\* Parts with price listed as "not.avbl" are not known to be available at this time, but are listed for reference.

## 1939 and 1940 Convertible Bodies

### • Firewall Options

Flathead

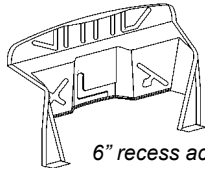
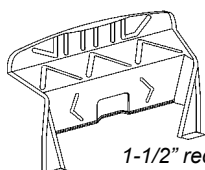
Chevy Smallblock V8



Designed for  
Maximum Leg  
Room  
Left 1" recess  
Right 2" recess  
Center 4" recess

Ford Smallblock V8

Bigblock



1-1/2" recess

6" recess across firewall

### • Dash Options

- Glove box lid included

1939  
Filled  
Style



1939  
Stock  
Style



1940  
Style



### Prices

1939 or 1940 Convertible body

**base price:**

22500.00

### Options

		<b>upcharge:</b>
A Firewall	Stock, Chevy, Ford, Bigblock	std.
C Deck Lid	1939-40 Trunk, 1939 Rumble	std.
D Dash	1939 Stock, Filled, 1940	std.
E Cowl Top	Filled	std.
	Working Vent	300.00
F Door hinge	Stock or hidden	std.
G Trunk latch	Remote or 1940 style	std.
L Door outside handle	no linkage	std.
	Linkage and key lock	400.00
J Windshied	Stock height or chopped	std.
M Back body	Dimple for fuel neck or filled	std.

### Fiberglass fender package

Front fenders, rear fenders, inner front fenders 3500.00  
1939 Deluxe/1940 or 1940 Deluxe hood

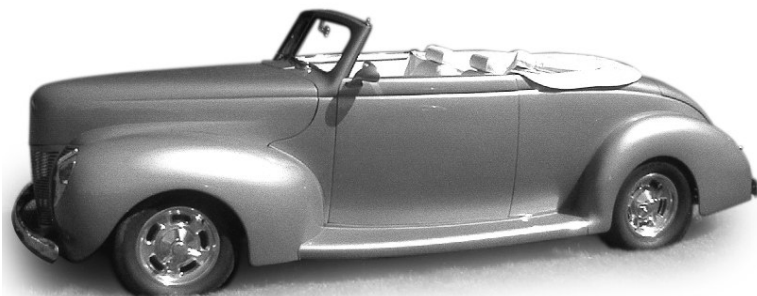
### Windows (frameless)

Operating windows include tempered glass that do not use frames, regulators, and felt,  
Specify clear, light grey, or light green tint

Doors	Power operated	1200.00
Doors	Manual operated	1000.00

### Top Iron Package

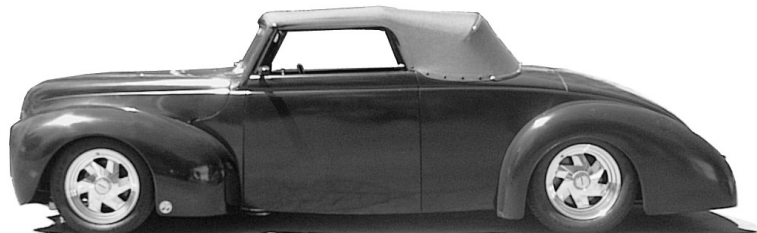
1939 or 1940 with chrome 1940 latches 5500.00



## Custom Convertible Bodies

### • 1939 or 1940 Custom

- Channeled over frame 4-1/2"
- Sectioned 1939 Deluxe/40 Standard Hood
- Fenders raised 2-1/2"
- Tire openings in fenders raised 1-1/2"
- Back of body sectioned 1-1/2"
- Trunk lid only



\* Parts with price listed as "not.avbl" are not known to be available at this time, but are listed for reference.